



Mobile Converged Networks

2.2.1 Shaping the Future: Mobile Network Evolution to NGN

Regional Workshop for the Arab Region on Guidelines on the Smooth Transition of Existing Mobile Networks to IMT-2000 for Developing Countries

Damascus, Syria 13-15 June 2005

John Visser, P.Eng.

Sr. Mgr., International Network Standards

Phone: +1-613-763-7028

Fax: +1-613-763-2697

Mobile: +1-613-276-6096

Email: jvisser@nortel.com



>THIS IS **THE WAY**

Shaping the Future:
Mobile Network Evolution to NGN

John Visser, P.Eng.

Sr. Mgr., International Network Standards

Damascus, 13 -15 June 2005

>THIS IS **NORTEL**

Objective and Outline

> Objective

- Show network transformation and convergence are essential for enhancing the user experience, and are driven by user demand
- Show mobility must be an integral capability of the Next Generation Network

> Outline

- Value: User Services / Service Infrastructure / Network
- Shifting “demographics”
- Convergence opportunity: mobility is a key dimensions of the NGN
- Convergence and network transformation
- Realizing the Vision: simplifying the user's life / transforming the network

3

What's Life Like

> Today ...

- Most people can't do without their mobile phones
- Content is on DVDs or magazines or books or a local hard-disk
- Contact Lists are by application, device, and individual situation



> In 2010 ...

- Everyone is connected and people can't do without being on-line
- The first place people go for content is on-line
- Informal peer groups and sharing is open and legal



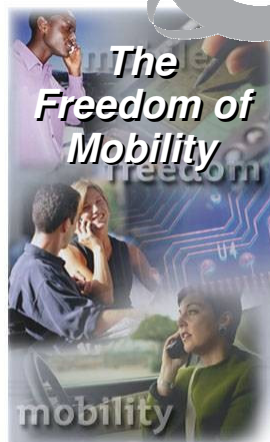
> In 2015 ...

- Everyone and everything is connected all the time, everywhere
- The only place people go for content is on-line
- Dynamic communities of interest without any boundaries



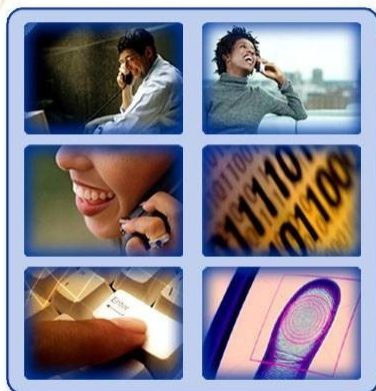
Today's technology savvy teenager (software downloading, IM addicted, camera phone wielding) **is grown up, a key decision maker at home and at work, and your target customer!**

End Users Value ...



... for enhanced productivity and user experience

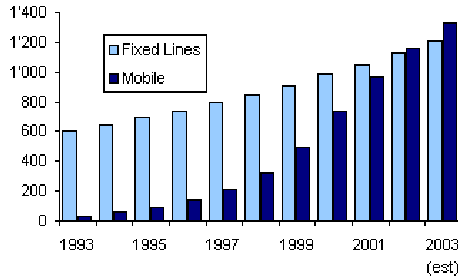
Eliminate boundaries ...



... to enable ubiquitous and seamless solutions

Mobile and Internet Revolution is Underway

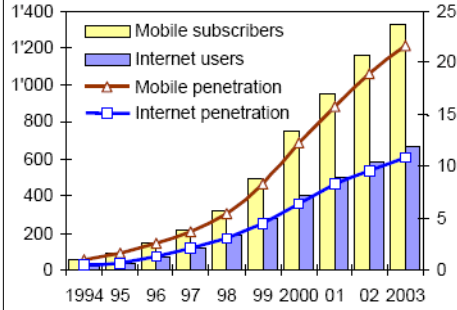
Mobile overtakes fixed: total subscribers, world, millions



From: "ITU and its Activities Related to IP Networks" (Apr 2004)

Data source: ITU World Telecommunication Development Report, 2002.

Users (millions) and penetration per 100 pop.



From ITU Internet Reports 2004: "The Portable Internet"

Data source: ITU World Telecommunication Indicators Database

Jan 2005

• UK: >100%: http://www.telecompaper.com/site/news_TA.asp?type=abstract&id=64718&NR=680

Mar 2005:

• Ireland: 94%: <http://www.rte.ie/business/2005/0318/comreg>

• Singapore: 91%: http://www.w2forum.com/item/singapore_mobile_phone_penetration_past

Mobile Revolution - Japan

> Example: TCA Japan Telecom Data Book 2004

• Ref:

<http://www.tca.or.jp/eng/database/annual/2004/index.html>

Fixed subscriber lines

Mobile subscribers

Paging

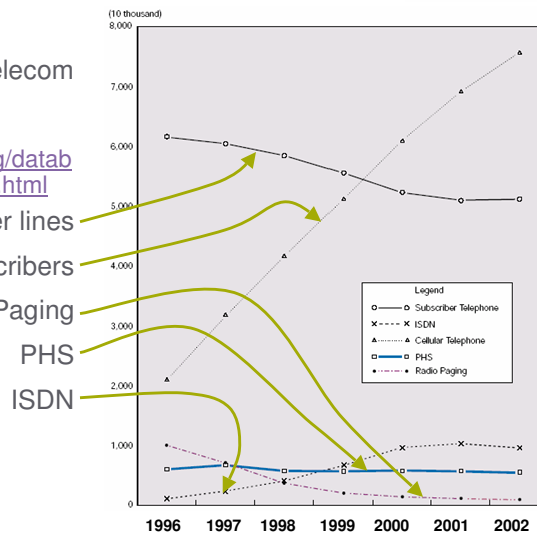
PHS

ISDN

> Continuing strong growth in mobile subscribers

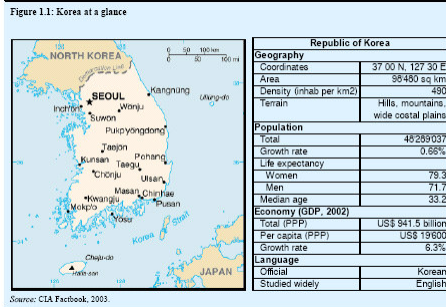
> Stabilizing fixed subscriber base

> ISDN starting to decline!



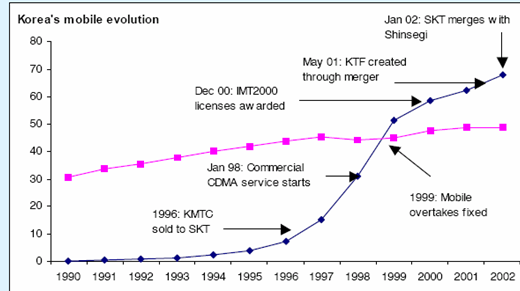
8

Mobile and Internet Revolution - Korea



<http://www.itu.int/osq/spu/ni/futuremobile/general/casestudies/koreacase-ry22.doc.pdf> (26 Feb 2004)

Figure 3.1: Korea's rapid mobile growth



9

Internet Revolution - Korea

Table 5-1 | Broadband Internet subscribers

Classification	2000	2001	2002	2003	2004. 6
Subscribers	4,017.5	7,805.5	10,405.5	11,178.5	11,617.8
Household rate	27.0	52.6	69.1	73.1	74.8

(unit: 1,000 people, %)

Data : Ministry of Information and Communication, July 2004

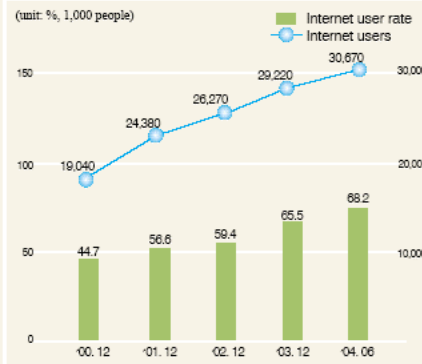
• **Strong correlation between mobility and internet usage**

• but varies by market: must always consider local factors

[http://www.nca.or.kr/homepage/ehome/ehome.nsf/BynewsV/1CACB7630D5C68F2C9256F3300114C44/\\$file/2004eng.pdf](http://www.nca.or.kr/homepage/ehome/ehome.nsf/BynewsV/1CACB7630D5C68F2C9256F3300114C44/$file/2004eng.pdf)

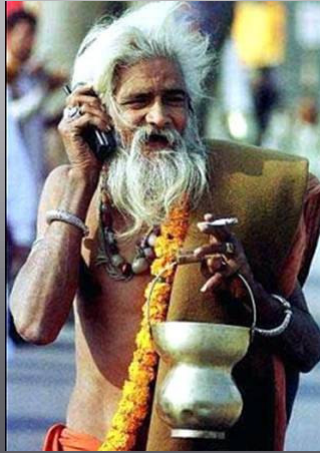
10

Figure 5-1 | Trend of Internet Usage Rate and Users



Business in India Country of Contrasts

Embracing Telecom



11

Stress All Designs



World Class-Capabilities



Forecasts

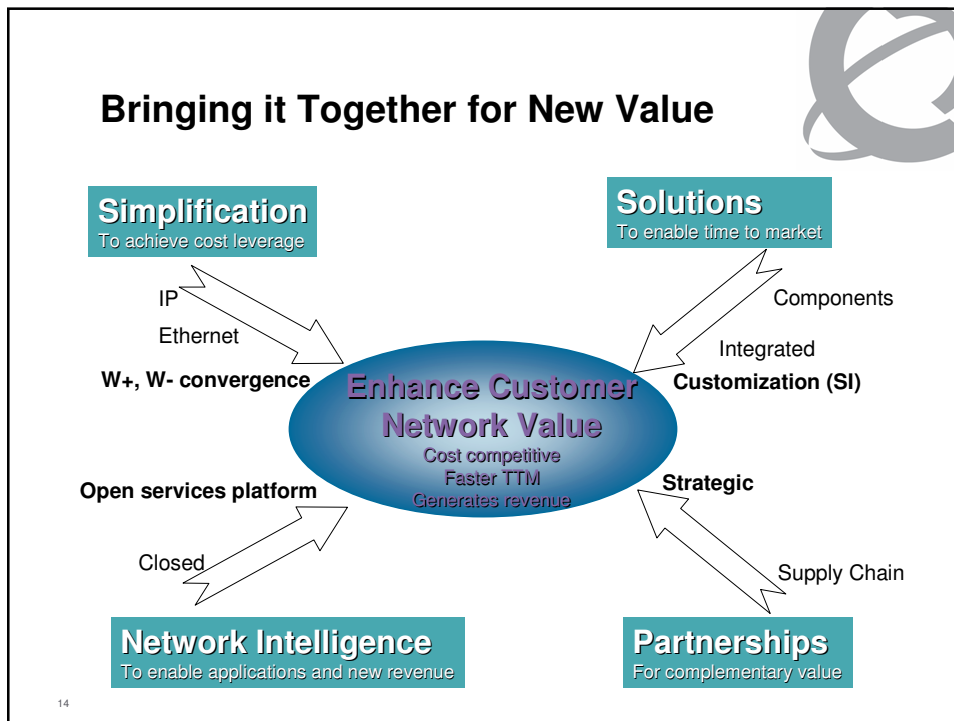
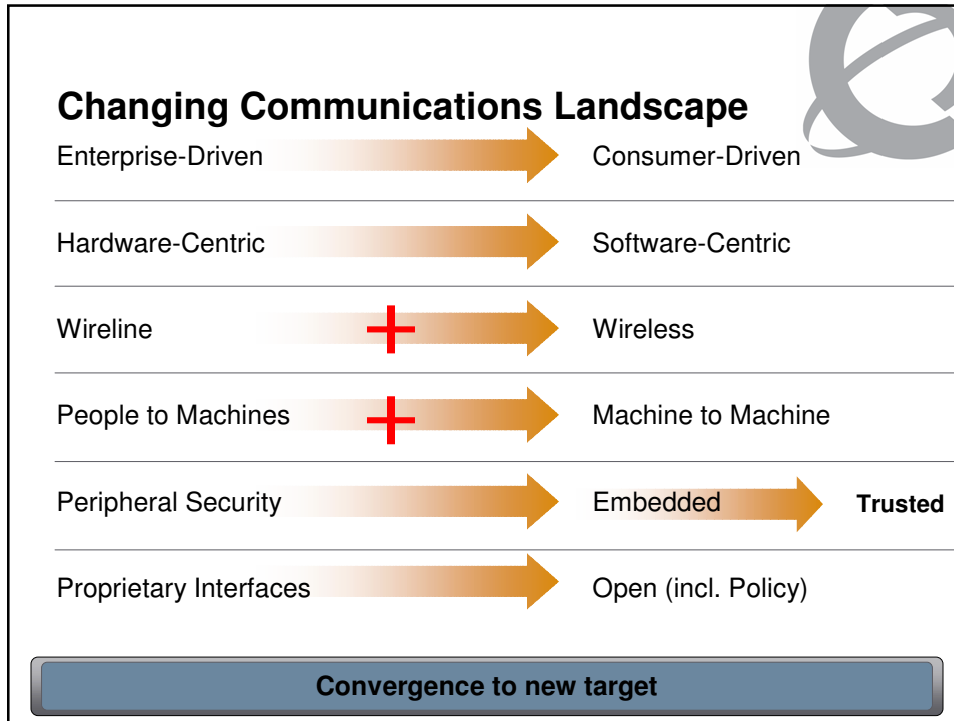
> Many available!

- Example: Yankee Group, News Release 24 Jun 2003:
 - estimate 18.6% of world's population currently has mobile phones
 - global wireless user base will increase 49% over next 4 years, reach 1.72B by 2007
 - global cellular subscriber revenue will grow from \$387B in 2002 to \$584B in 2007, similar in value to crude oil production
- Reality: Dec 2004*:
 - enormous growth in Russia, India, China: e.g., China added 9.25M mobile subscribers in Feb 2005!**
 - global wireless user base: 1.5B at end 2004; internet user base: 700M at mid 2004
 - global mobile revenue already \$414B in 2003

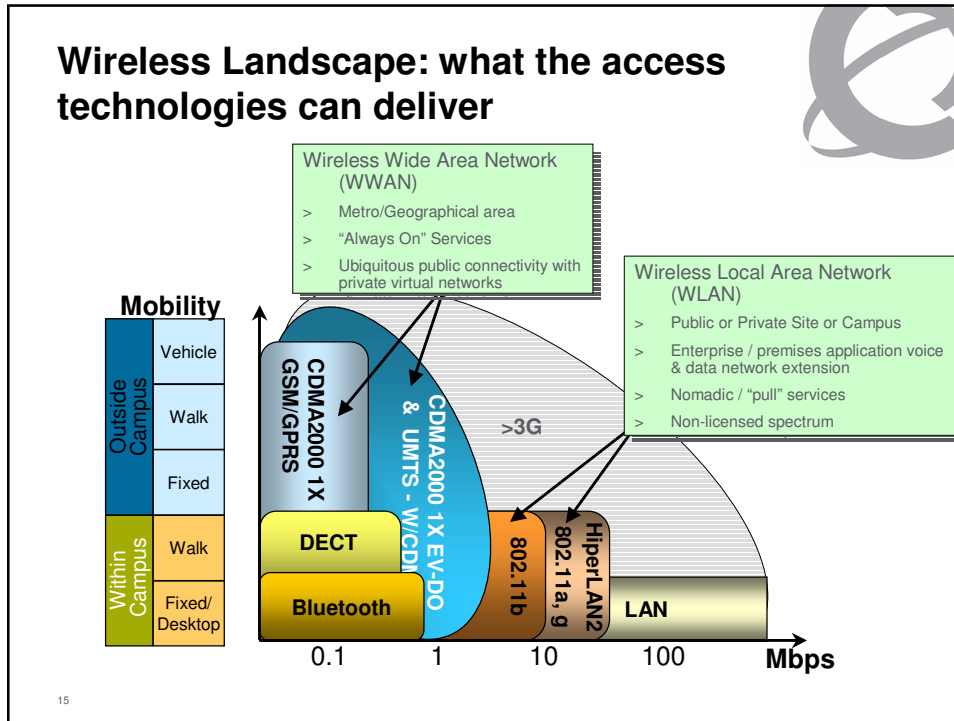
* CNN: www.cnn.com Dec 9, 2004, using ITU info

** Shosteck Email Briefing, April 2005; www.shosteck.com

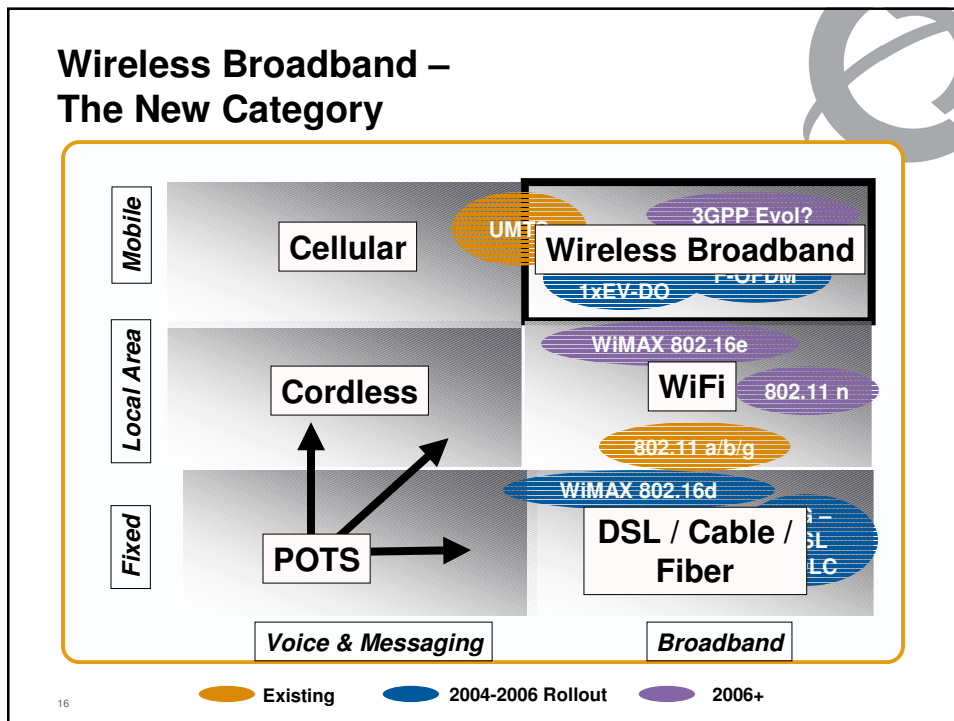
12



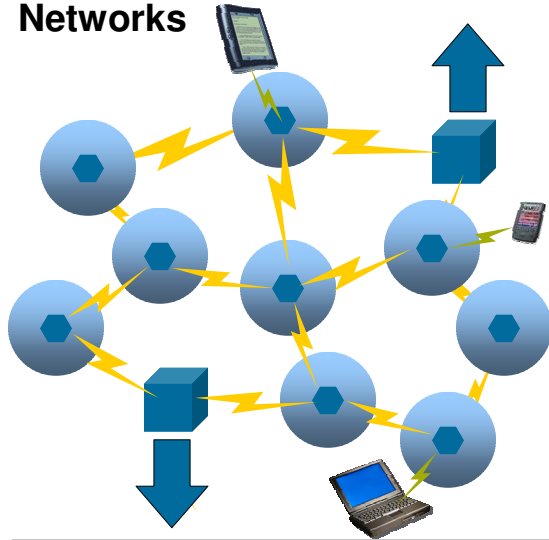
Wireless Landscape: what the access technologies can deliver



Wireless Broadband – The New Category



New Deployment - Wireless Mesh Networks

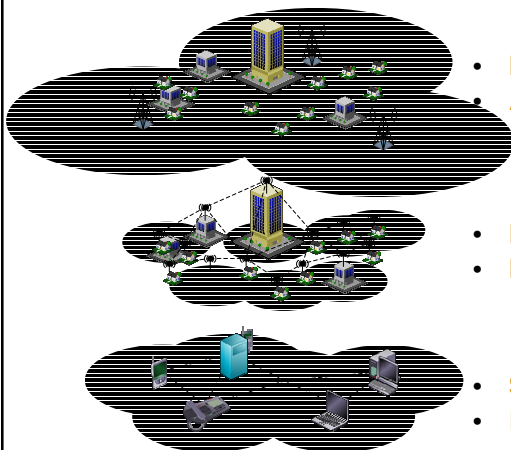


- > Makes WiFi public / city hotspot deployment economic
- > Reduces Operating Costs – Backhaul
- > Commercially Available
- > Taipei, Taiwan Deployment Announced
- > 4 Universities – 2 continents

Can be used to extend WiFi coverage + Use WiMAX 802.16e or HSPA MVNO to provide macrocellular coverage

17

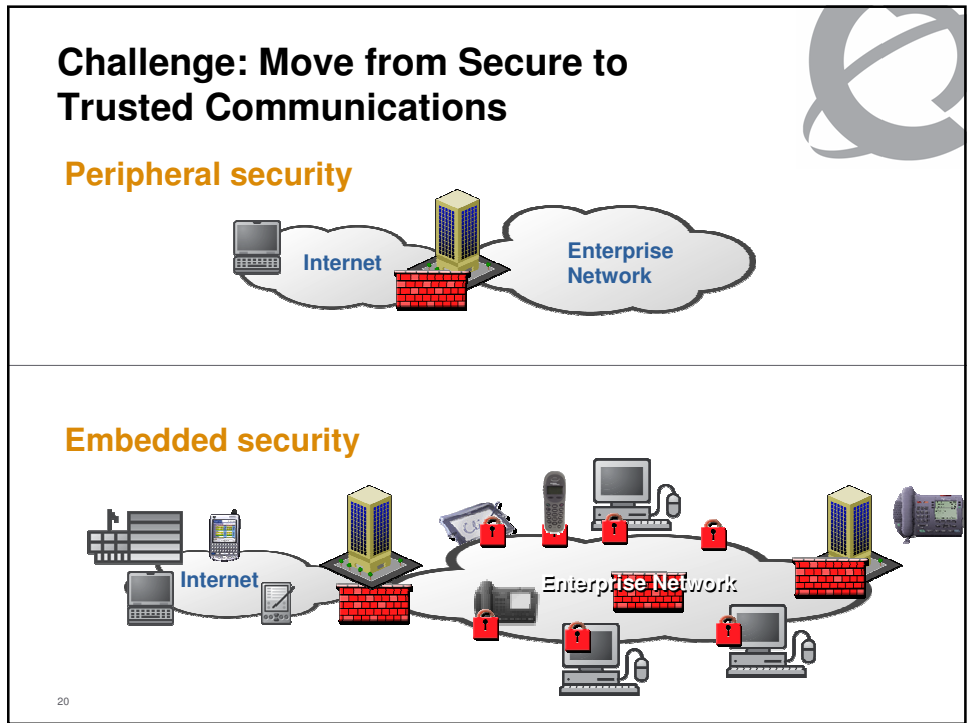
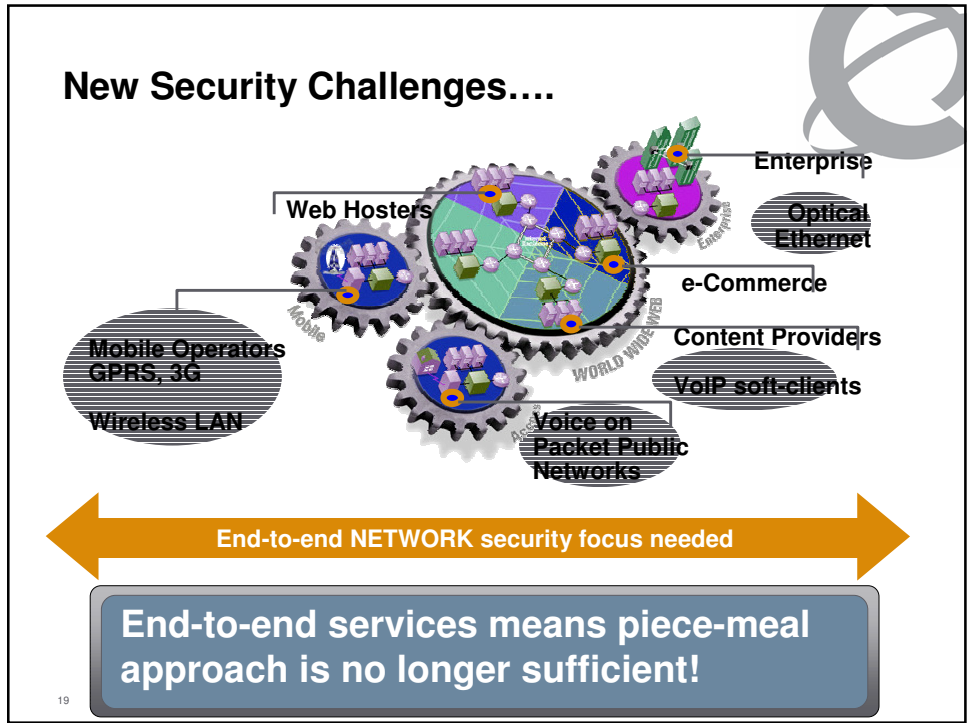
The Un-Wiring of the Future



- **Mobility / WWAN**
- **A Million nodes @ \$50k**
- **Nomadic / Mesh / WLAN**
- **Millions of Nodes @ \$100**
- **Sensor / Ad-hoc / WPAN**
- **Billions of Nodes @ \$1**

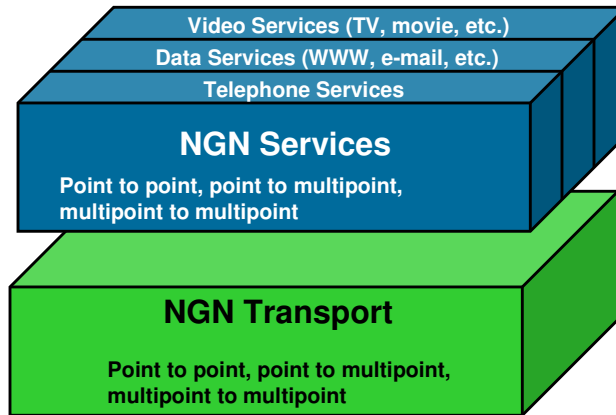
... connected through the Wireless Packet Network

18



NGN - Convergence Model

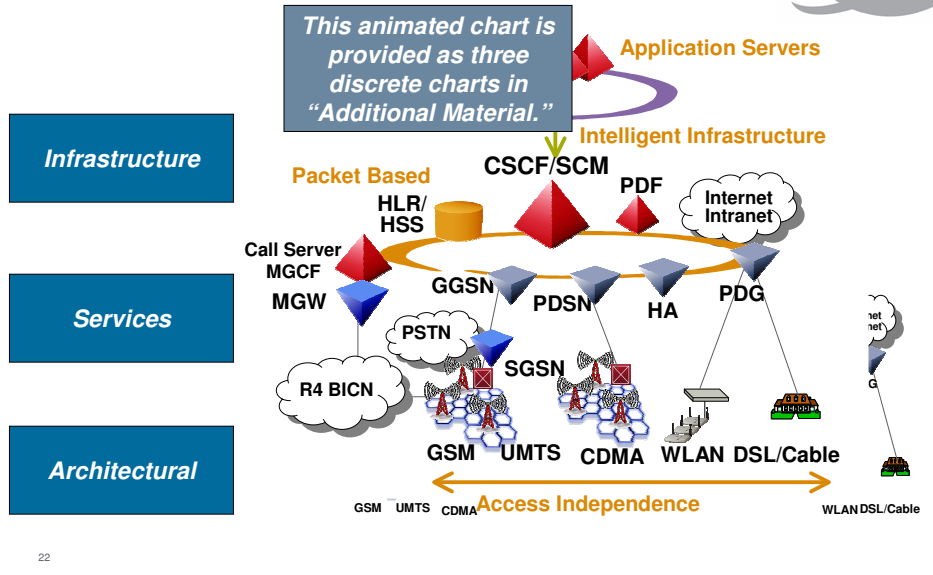
> What's new: horizontally integrated network



21

ITU-T Recommendation Y.2011

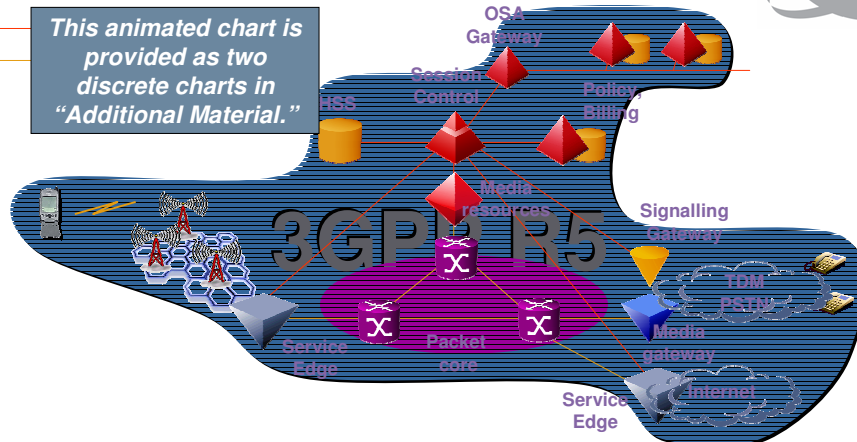
Generic Convergence



22

3GPP R5 network architecture

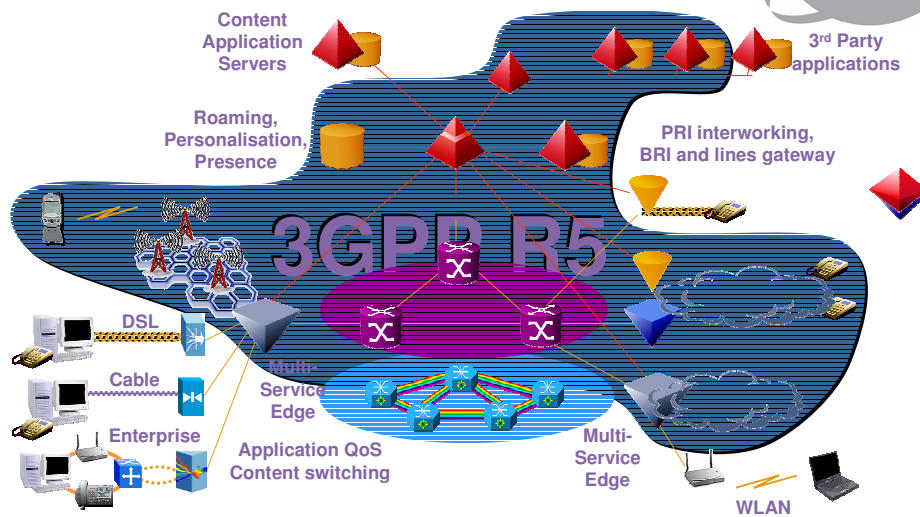
This animated chart is provided as two discrete charts in "Additional Material."



- 3GPP R5 IM Subsystem provides a SIP and H.248 framework for the applications and control environment of converged wireless networks
- Applications creation environment permits extending applications to users independently of their means and point of access

23

Nortel's fully Converged Architecture

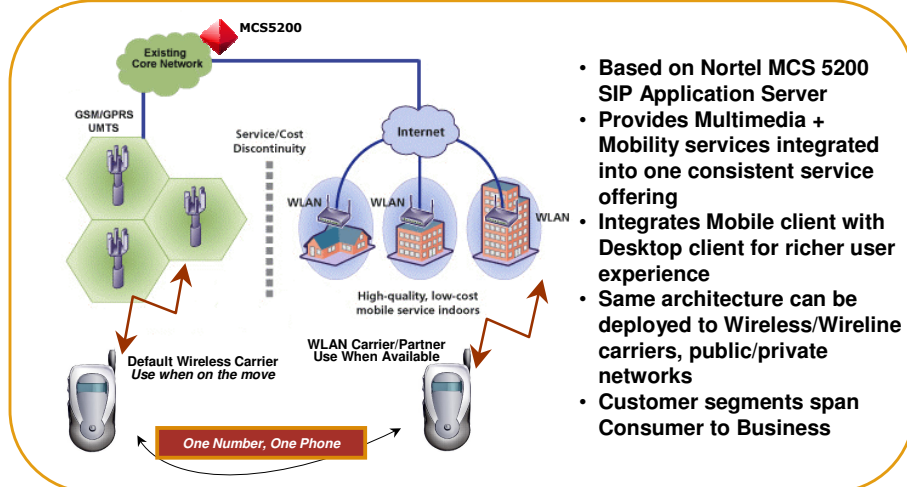


Converging wireless, wireline, Enterprise, voice, multimedia and data

24

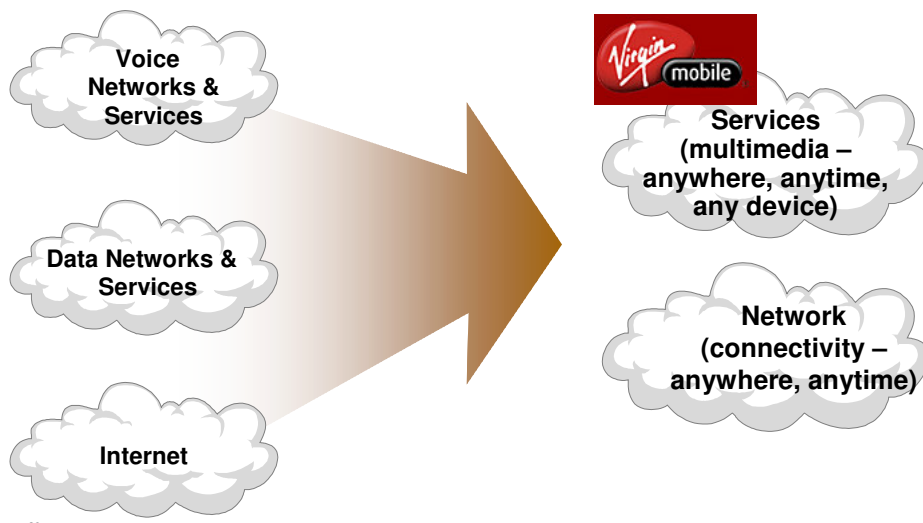
Converged Mobility Solution – Access Virtualization

Leveraging MCS 5200 with Dual-Mode WLAN/Mobile Handsets



25

The Value Shift Opens up Opportunity & Threat for New Competitive Models



26

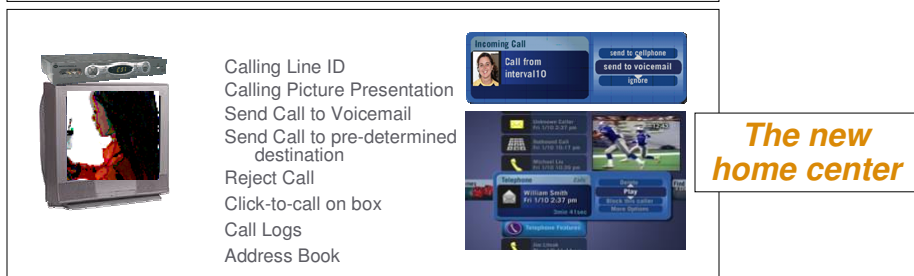
Enhancing End User Experience: Blending User Devices

- > PC, phone(s) and PDA: different user interfaces to the same network-based application
- > Common, network-based directory for:
 - Phone numbers
 - Buddies & presence
 - Email address book
 - All applications
- > Just one address to reach the user
- > Unified, network-based, user profile applying to all terminals
 - E.g., set presence location, call routing preferences, etc., on any terminal and it applies to all

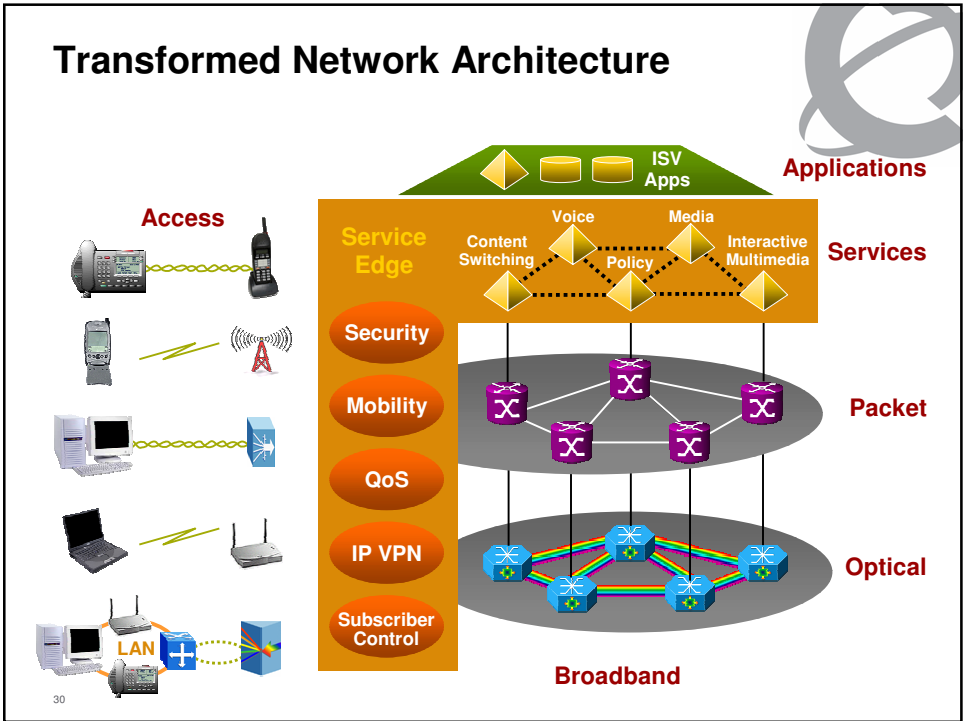
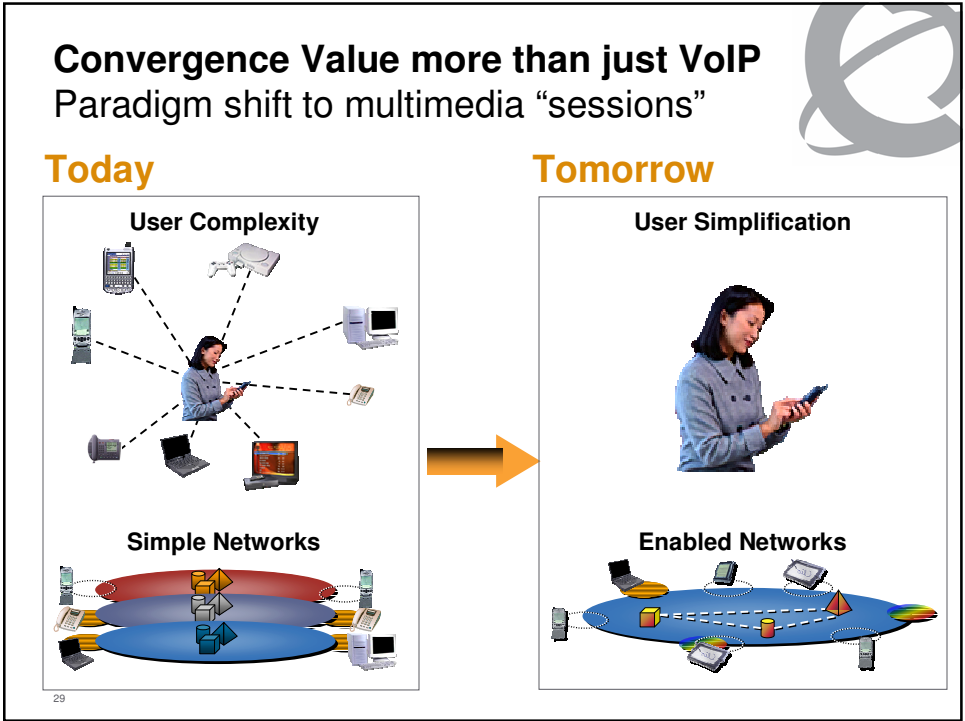


27


Transforming the User Experience – Application Convergence



28




The Transformed Next Generation Network



- Always on
- Anytime, anywhere and in any form
- Voice and multimedia
- Self service, intuitive
- Simple for the end user
- Secure, trusted and reliable

31



Thank you!

32